

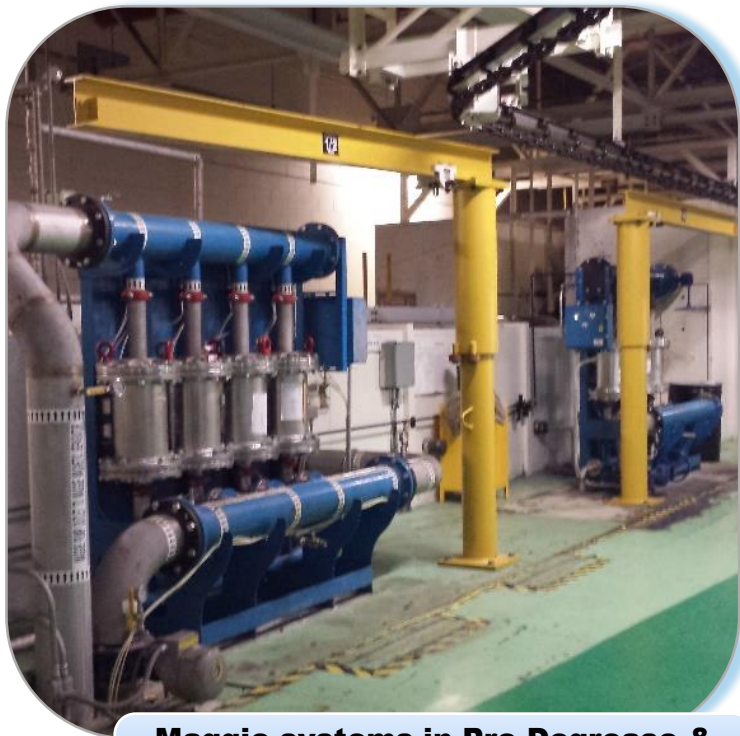
Automotive Manufacturer Installs Maggie and Reduces Paint Process DPU by 86%

The Most Advanced, Automatic,
Non-Disposable Liquid Filtration System



ZERO GRAVITY
FILTERS

Paint Pretreatment



Maggie systems in Pre-Degrease & Degrease removing weld balls to reduce defects



Maggie MG2600, 4-Station with Smart Drum PLUS rated at 1,000 gpm

Customer Challenge:

A car manufacturer was averaging 10 defects per unit (DPU). Due to improved sales, they had to increase line speed. After the line speed increased, the DPU's doubled to an average of 20 DPU.

ZGF Solution:

ZGF installed the 1st Maggie system (Maggie MG2600, 4-Station, 1,000 gpm) on the "Pre-Degrease" stage and DPU decreased significantly.

ZGF installed a 2nd Maggie system (Maggie MG2600, 4-Station, 1,000 gpm) on the "Degrease #1" stage and DPU continued to decrease.

Results:

The company is now averaging 2.8 DPU and continuing to trend downward.

Maggie is removing more than 8 grams of dirt (weld balls/weld slag) per vehicle.

Implementation of ZGF Maggie technology directly contributed to an 86% reduction in DPU