

MACHINING LIMITS TO BE ± .10mm UNLESS OTHERWISE STATED

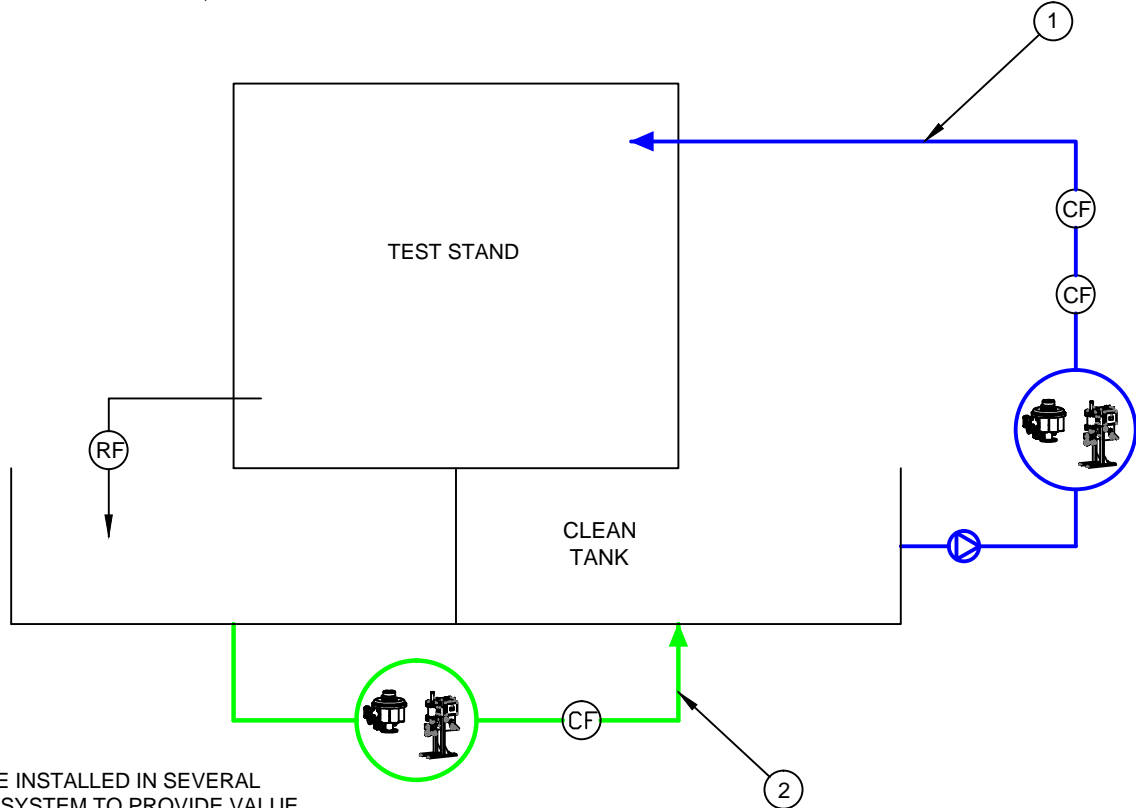
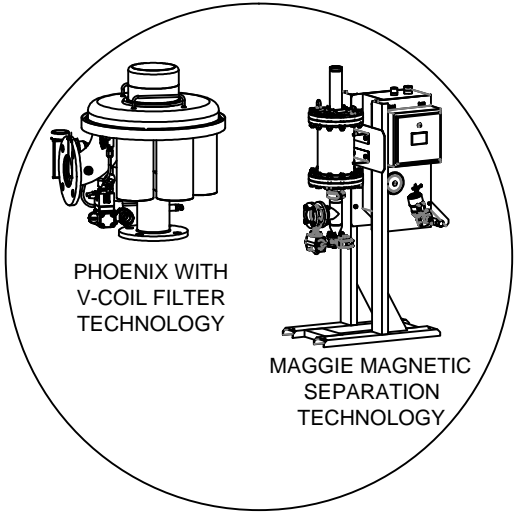
|           |           |  |  |  |  |  |  |  |  |  |
|-----------|-----------|--|--|--|--|--|--|--|--|--|
| ISSUE NO. | 1         |  |  |  |  |  |  |  |  |  |
| DATE      | 15 DEC 14 |  |  |  |  |  |  |  |  |  |

THIRD ANGLE PROJECTION

ISSUE CONTROL NOTES;  
ISSUE 1 ORIGINAL

### TEST STANDS

- ZGF TECHNOLOGY PROVIDES COST, QUALITY AND ENVIRONMENTAL BENEFITS
- \* LONGER TEST STAND FLUID AND CARTRIDGE FILTER LIFE
  - \* IMPROVED PROCESS RELIABILITY
  - \* NO CONSUMABLES AND VIRTUALLY NO FILTER MAINTENANCE
  - \* FULLY AUTOMATIC, 24/7 OPERATION



ZGF MAGGIE OR PHOENIX TECHNOLOGY CAN BE INSTALLED IN SEVERAL CRITICAL PROCESS POINTS THROUGHOUT THE SYSTEM TO PROVIDE VALUE

- ① INLINE TO SPINDLE/TOOLS
- ② INLINE FOR FLUSHING
- RF RETURN LINE FILTER
- CF INLINE CARTRIDGE FILTER

ZERO GRAVITY FILTERS  
12300 EMERSON DR  
BRIGHTON, MI 48116, USA

TITLE  
PROCESS DIAGRAM  
STAND ALONE MACHINING CENTER (SINGLE TANK)

|         |          |           |
|---------|----------|-----------|
| MATL:   | DRAWN:   | MG        |
| SPECN:  | CHECKED: | MG        |
| No DFF: | DATE:    | 15 DEC 14 |

No ZG 10466  
SHEET 05